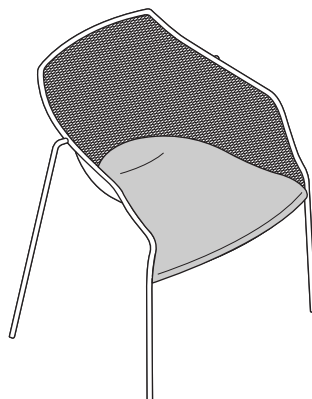
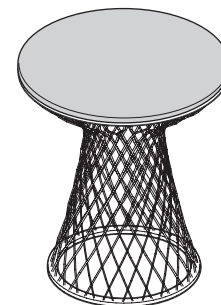


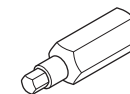
CHAIR



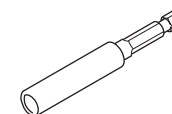
ARM CHAIR



POUF/SIDE TABLE



HEX DRIVE

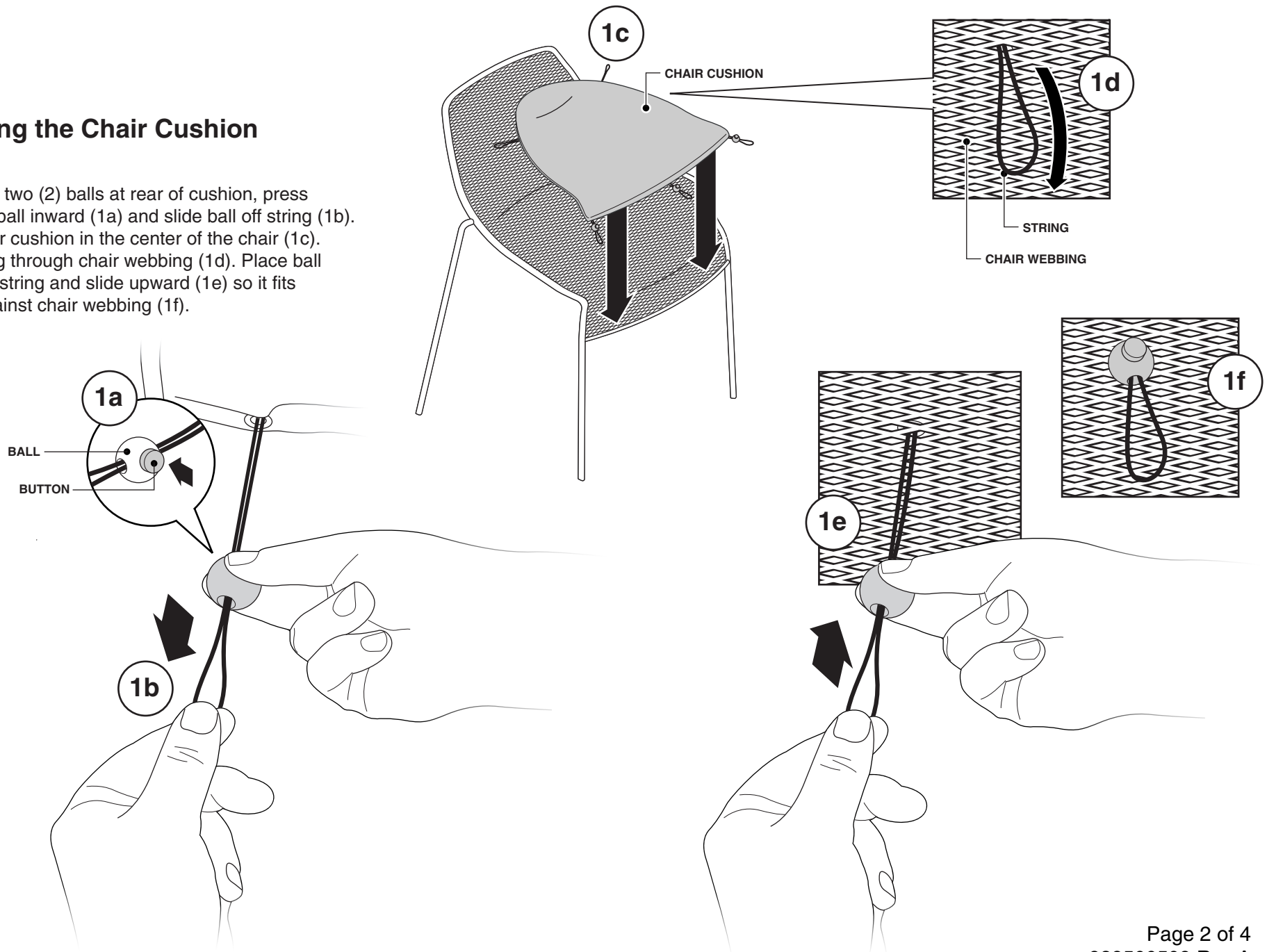


If you have a problem, question, or request, call your local dealer, or Coalesse at 1.800.627.6770 Or visit our website: www.coalesse.com

© 2009 Coalesse
San Francisco, California U.S.A.
Printed in U.S.A.

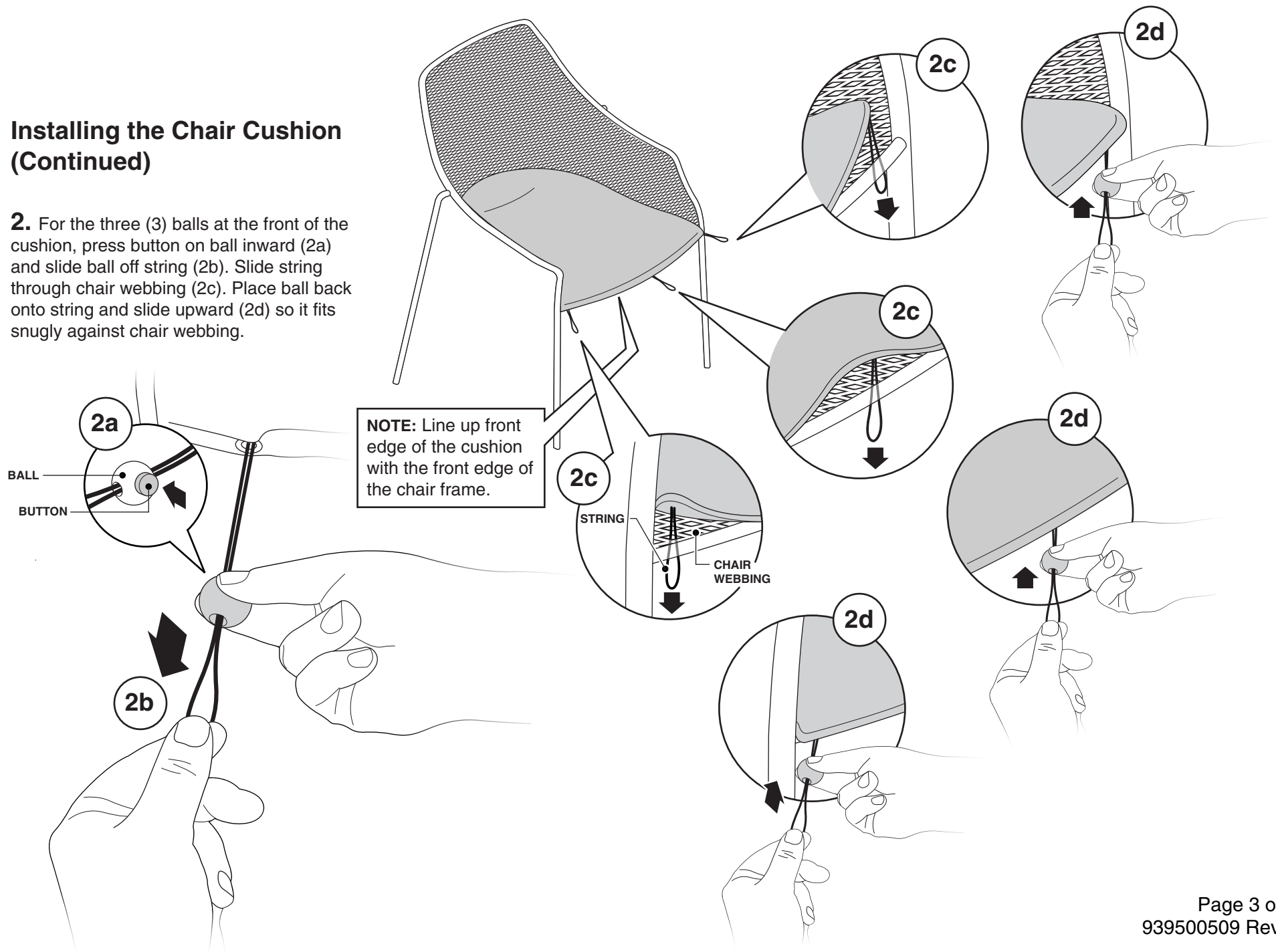
Installing the Chair Cushion

1. For the two (2) balls at rear of cushion, press button on ball inward (1a) and slide ball off string (1b). Place chair cushion in the center of the chair (1c). Slide string through chair webbing (1d). Place ball back onto string and slide upward (1e) so it fits snugly against chair webbing (1f).



Installing the Chair Cushion (Continued)

2. For the three (3) balls at the front of the cushion, press button on ball inward (2a) and slide ball off string (2b). Slide string through chair webbing (2c). Place ball back onto string and slide upward (2d) so it fits snugly against chair webbing.



Installing the Pouf Cushion

1. Lower pouf onto underside of pouf cushion.
2. Secure pouf to cushion using three (3) screws. Screw must be inserted through each bracket and into underside of pouf cushion.

